



OVERLAND STORAGE RESOURCE MANAGER

enterprise edition

VERSION 3.2

Maximize the Time and Money Your IT Staff Spends on Network Storage

AUTOMATE DATA STORAGE POLICIES

As an IT professional, you need to know what data is taking up space, where to store it, what to archive and what to simply remove. With Overland Storage Resource Manager (SRM), your job just got easier. Overland SRM provides IT professionals the ability to analyze storage trends, take corrective action before issues arise, rapidly identify and resolve storage problems, and optimize storage resources.

A FULLY OPEN SRM SOLUTION

The Overland SRM dashboard boasts a Web interface that provides application independence and real-time data on storage utilization across multiple platforms and applications. Overland SRM is a fully open solution that allows organizations to implement active storage management policies for Windows NT/2000, Novell NetWare, Sun Solaris, IBM AIX, HP-UX, Linux, Microsoft Exchange, Microsoft SQL Server, Sybase and Oracle databases. The software can be installed in less than an hour, so you can quickly optimize your heterogeneous Direct Attached Storage (DAS), Network Attached Storage (NAS), and Storage Area Network (SAN)—including multi-vendor environments.

WITH OVERLAND SRM YOU CAN:

Immediately Optimize Existing Storage Assets

Overland SRM automatically scans and collects vital information about your data storage resources. This allows you to immediately improve your existing storage assets with an average 30% - 50% reduction in storage requirements.

- Rightsize data and reclaim valuable disk space
- Generate preset and customized reports
- Charge back the costs of data storage to appropriate business units

Simplify SAN/NAS Planning or Implementation and Server Consolidations

Overland SRM helps you appropriately plan for SAN/NAS implementations or server consolidations by providing real information on your existing data before you make a move, so you can avoid last-minute purchases and unnecessary expenses.

- Improve planning and justification for capital asset purchases
- Identify and migrate only critical data



- BUY ONLY WHAT YOU NEED
- INSTALL IN LESS THAN AN HOUR
- GET IMMEDIATE ROI

Disaster Recovery Planning & Shortened Backup Windows

Overland SRM not only maximizes storage space, it helps you optimize business continuity, disaster recovery, backup and restoration. You can identify and eliminate duplicate, stale, or illegal files and automatically run external scripts that allow you to delete those files or move them to a less expensive storage alternative.

- Decrease time required for backup and recovery

Automate Maintenance with Flexible Policy Management

Overland SRM offers flexible policy-based storage management that can automate dozens of tasks—and even take immediate action when a threshold is violated. Overland SRM provides you with a number of customized alert options, including pop-up messages, email, pager, event log, and SNMP traps.

- Automate time-consuming tasks and server clean-ups
- Rapidly identify and resolve problems before they occur

> **Fast Scanning:**
Quickly inventories and displays the status of all storage assets on your network.

> **Active Storage Management:**
Automatic storage and system threshold monitoring detects and takes action when a policy is breached.

> **Instant Reporting:**
Reports can be automatically scheduled and delivered to give you the latest data on all your system and storage resources across the enterprise.

> **Comprehensive Notification Tools:**
Choose from pop-up, email, event log, SNMP traps, or HTML reports.

> **Trending:**
Easily get storage resource tracking, analysis, and growth trends.

Overland Storage Resource Manager (SRM) System Requirements

Primary Server

- > Microsoft Windows 2000 Server (SP 2 or SP 3) or Windows 2000 Advanced Server (SP 2 or SP 3)
- > 1 GHz Processor
- > 1 GB RAM + 1 GB RAM if Database is also on the Primary Server
- > Microsoft Internet Explorer 5.5 or 6.0
- > Netscape 6.2
- > Microsoft IIS 5.0
- > MDAC 2.6 or later
- > 10 GB disk space

Supported Databases

- > Oracle 8i (Standard or Enterprise)
- > Microsoft SQL Server 2000 (SP 2 or SP 3)
- > MSDE 2000

Agents for Windows

- > Microsoft Windows NT Server 4.0 (SP 6a)
- > Microsoft Windows 2000 Professional (SP 2 or SP 3)
- > Microsoft Windows 2000 Server (SP 2 or SP 3)
- > Microsoft Windows 2000 Advanced Server (SP 2 or SP 3)

Agents for UNIX

- > Sun Solaris 2.6, 2.7, 2.8, or 2.9
- > HP-UX 11.00
- > IBM AIX 4.3.3
- > Red Hat Linux 7.2 or 7.3
- > Red Hat Enterprise Linux Advanced Server 2.1

Agents for NetWare

- > Novell NetWare 5.1 (SP6)

Agents for Applications

- > Microsoft Exchange Server 5.5 (SP 4) or Exchange Server 2000 (SP 3)
- > Microsoft SQL Server 2000 (SP 2 or SP 3)
- > Oracle Server 8.i and 9.i
- > Sybase 12.0 or 12.5



OVERLAND STORAGE RESOURCE MANAGER
enterprise edition

ABOUT OVERLAND STORAGE

- Over 20 years of experience in storage management solutions.
- Engineering excellence with award-winning library robotics design.
- Offers a family of fully open storage management solutions.
- Overland Storage meets the needs of IT professionals in industries worldwide.

OVERLAND SRM 3.2 - PROVIDING ACTIVE STORAGE MANAGEMENT

Cross Platform Intelligent Actions

Overland SRM 3.2 gives organizations the ability to actively analyze storage trends, take corrective action before issues arise, rapidly identify and resolve storage problems, and optimize storage resources across all major operating systems: Windows NT/2000, Novell NetWare, Sun Solaris, IBM AIX, HP-UX, and Red Hat Linux. Overland SRM also gives the administrator fine-grained controls to automatically run external scripts, move files to less expensive storage alternatives, or launch various housekeeping tasks.



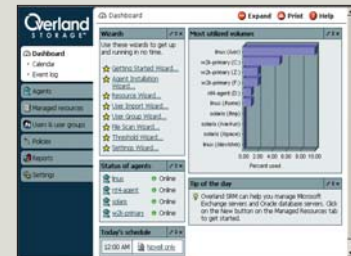
Oracle, Microsoft SQL Server, Sybase, and Microsoft Exchange Agents

Overland SRM 3.2 provides agents for mission critical applications including Oracle and Microsoft Exchange. These databases or mailbox scans and detailed reports are fully customizable and can be scheduled around the clock. SRM application agents provide critical information about capacity used and allows you to set thresholds that warn you before your Oracle database, Sybase, SQL database, or Exchange server run out of disk space.



Web Management Console

Overland SRM 3.2 provides a user-definable Dashboard web page that gives the administrator a useful overview of the enterprise, offering easy to understand snapshots of such things as resources, wizards, settings, running policies, and scheduled agents.



Simplified Installation and Configuration

Overland SRM 3.2 is designed to be installed in less than an hour and immediately gives organizations the ability to implement smarter policies, detect problems, and reclaim unused resources for immediate return on investment. Overland SRM also includes Wizards that guide administrators through the configuration and implementation process.



WORLDWIDE HEADQUARTERS

4820 Overland Avenue
San Diego, CA 92123 USA
TEL 1-800-729-8725
1-858-571-5555
FAX 1-858-571-3664
EMAIL sales@overlandstorage.com

UNITED KINGDOM (EMEA OFFICE)

Overland House
Ashville Way
Wokingham, Berkshire
RG41 2PL England
TEL +44 (0) 118-9898000
FAX +44 (0) 118-9891897
EMAIL europe@overlandstorage.com

FRANCE OFFICE

Overland Storage
13 rue Camille Desmoulins
92441 Issy les Moulineaux Cedex
France
TEL +33 (0) 1 58042550
FAX +33 (0) 1 58042636
EMAIL europe@overlandstorage.com

GERMANY OFFICE

Humboldtstr. 12
85609 Dornach Germany
TEL +49-89-94490-214
FAX +49-89-94490-414
EMAIL europe@overlandstorage.com

ASIA PACIFIC REP. OFFICE

30 Robertson Quay, #02-10
Singapore, 238251
TEL 65-6839-3510
FAX 65-6738-3008
EMAIL asia@overlandstorage.com

WWW.OVERLANDSTORAGE.COM